

Arts in the Park

*Arts are very much alive
in the heartland of
Florida!!*

Arts of the Inland is pleased to
present our first **Arts in the
Park** on February 4, 2012.

*This is your opportunity
to sell and be seen!*

This arts show will showcase
visual artists, literary artists,
theatre arts, musical arts; the
best the inland area has to
offer!

Hours for viewing at Barron
Park are 9:00am to 5:00pm.
Music will be provided though
out the day until 8:00pm

Arts in the Park

Directions to Barron Park, LaBelle, FL

Barron Park is located on the east side
of SR29 at Fort Thompson Road in
LaBelle, FL.

If you are coming from the west coast
LaBelle is 28 miles east of Fort Myers
on State Road 80 (Palm Beach Blvd).

If you are coming from the east coast,
LaBelle is 98 miles west of West Palm
Beach on State Road 80.

If you are travelling south from the
Orlando area, take U.S. 27 south for
74 miles to Palmdale, where you pick
up County Road 29 for the final 14
miles to LaBelle.



Arts of the Inland, P.O. Box 38
Alva, FL 33920
863-535-6278

LaVon Koenig—President
Tom Dugan—Vice President
Susan Jordan - Secretary
Tonda Soisson Lawson—Treasurer

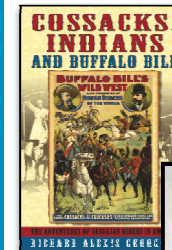


Arts in the Park

February 4, 2012

9:00am to
5:00pm

Barron
Park



On the City's Waterfront Along
the Caloosahatchee River
In Historic LaBelle, Florida for this
One Day Cultural Event

9:00am to 5:00pm

Hosted by the Arts of the Inland

Tel: 863-535-6278
www.artsoftheinland.com
Email: artsoftheinland@gmail.com



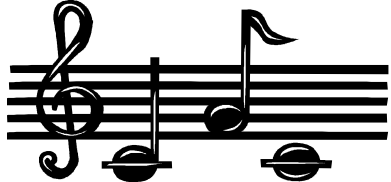
Arts in the Park, February 4, 2012

Vendor Order Form

Please complete and mail to:
 Arts of the Inland, P.O. Box 38
 Alva, FL 33920

The mission of the Arts of the Inland (AOI) is to facilitate and nurture the creation, development, promotion and education of arts and culture in the inland communities of South Florida.

The purpose is then to promote artistic culture and artistic heritage to all of the people in the area through the Arts of the Inland.



The Arts of the Inland meet on the third Tuesday of each month at locations throughout our inland area from 6:00pm to 7:30pm. To find out more about our meetings and locations or the Arts of the Inland, visit our website www.artsoftheinland.com

Eligibility

Display spaces are just \$40.00 for AOI members; \$80.00 for non members.

To join the Arts of the Inland is just \$20.00 and can be paid along with your registration.

All work must be an original creation of the artist.

Completed registration form must be received by January 27th to reserve a space in the show.

Set up on February 4th will begin at 7:00am and must be completed by 9:00am. Tear down cannot begin before 4:00pm unless previous arrangements have been made.

We offer to rent:

- 10' x 10' Canopy tent \$100
- 8' Folding table \$10
- Folding chair \$2
- Electricity hook-up (30amp) \$20.

Lehigh Singers dba ARTS OF THE INLAND, is a 501(c)(3) not-for-profit organization

| Qty. | Description | Price | Subtotal |
|------|--------------------|-------|----------|
| | Space | \$40 | |
| | Non-Member Space | \$80 | |
| | Tent | \$100 | |
| | Table | \$10 | |
| | Chair | \$2 | |
| | Electricity | \$20 | |
| | Membership for AOI | \$20 | |
| | Order Total | | |

| |
|----------|
| Name: |
| Company: |
| Address: |
| |
| Phone: |
| Email: |
| |
| |

Method of payment:

- Check enclosed—payable to Arts of the Inland
- Credit Card

| |
|---------------------------|
| Name on card: |
| Billing address for card: |
| |
| Card# |
| Exp. Date: |
| Amount to be charge: |
| |